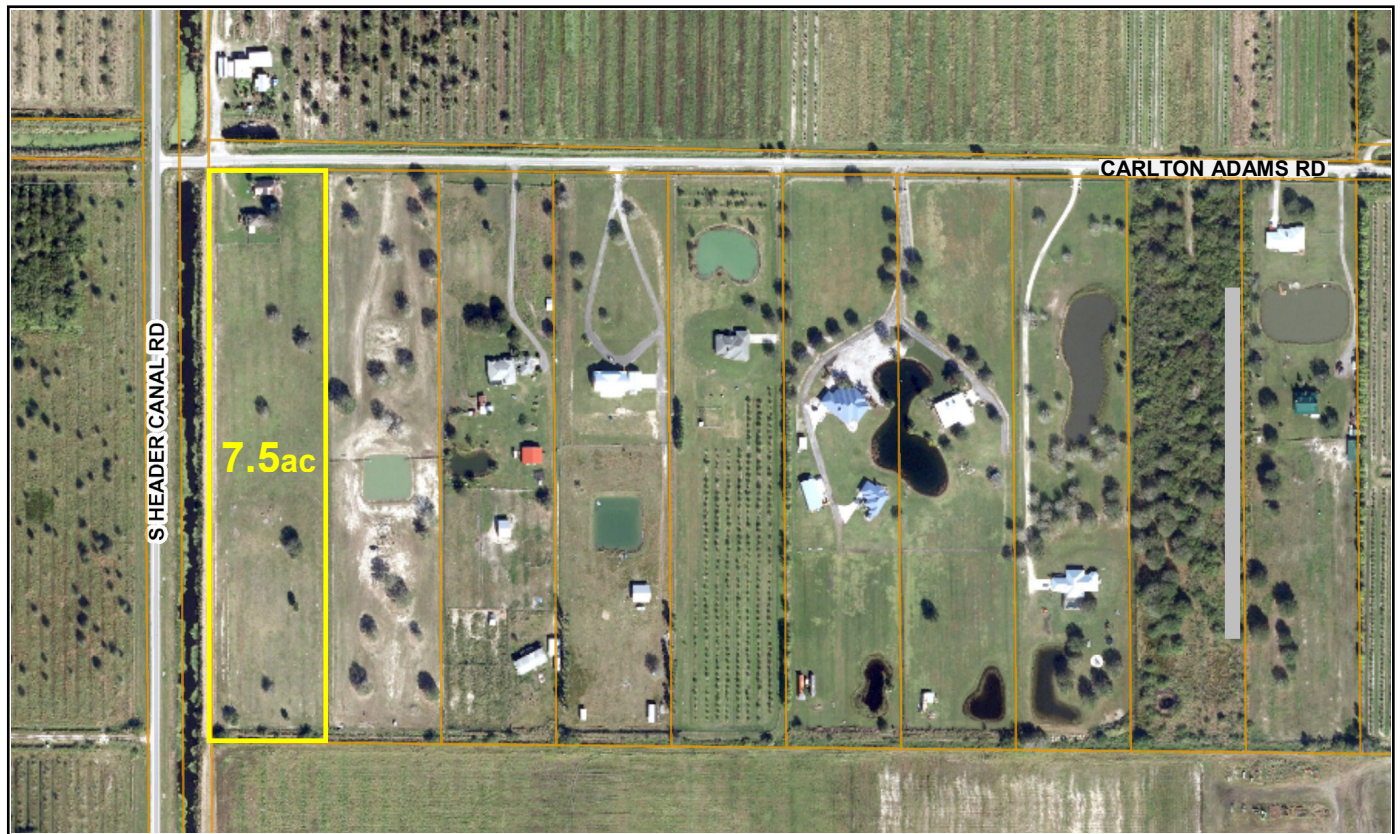


7.5+ ac with 1,258sf Home

4200 S Header Canal Rd, Fort Pierce, St Lucie County, Florida 34945



- 7.54ac: Fenced, Laser-Levelled, Mature Oaks
- Circa 1930s Frame Home; 2 BR / 1 Bath w Attic
- 30' X 48' Partially Enclosed Pole Barn
- 260' Frontage on Carlton Adams Road
- 1,265' Frontage on Header Canal
- Zoning: AG-5 Agricultural, 1 Dwelling Unit per 5ac
- Ag Exempt Taxes: 2019 = \$1,643.33
- Convenient, quick access to I-95 & FL Turnpike
- 1 mi North of Okeechobee Rd; 4 miles South of Orange Ave
- St Lucie Co. PID #: 2236-700-0001-000-7



531 South US Highway 1, Suite B, Fort Pierce, FL 34950

\$299,000.

Office: 772.468.8306 • Cell: 772.201.5650
email: mark@waltersco.com



Pasture & House from south end of Property.



Looking south from House.



Office: (772) 468-8306

Mark's Cell: (772) 201-5650

Email: mark@waltersco.com

mark walters & company
real estate brokers & auctioneers